

Intra-oral welding of temporary implant abutments with a pre-fabricated titanium bar: **A new technique** for accelerated rigid splinting of immediately loaded implants

Peter Gehrke¹, Marco Degidi², Andre Spanel³, Günter Dhom¹, Adriano Piattelli⁴

(1) - D.D.S., Private Practice, Ludwigshafen, Germany

(2) - M.D., D.D.S., Private Practice, Bologna, Italy, Visiting Professor University of Chieti-Pescara, Italy

(3) - DENTSPLY Friadent, Mannheim, Germany

(4) - M.D., D.D.S., Professor of Oral Pathology and Medicine, Dental School, University of Chieti-Pescara, Italy



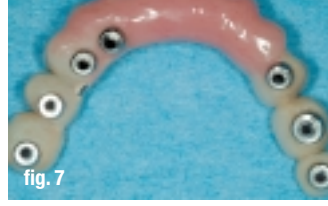
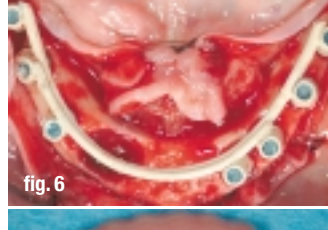
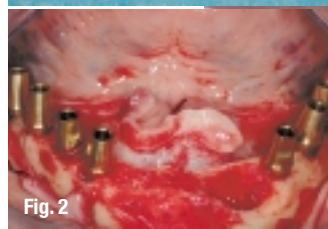
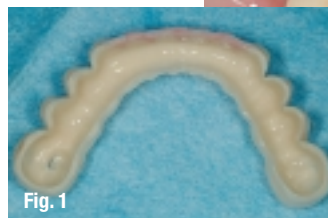
Introduction

Although initial considerations in implant dentistry have claimed that the process of osseointegration requires on average an undisturbed healing of three months in the mandible and six months in the maxilla¹⁻³, an increasing interest has been noticed with regard to early and immediate loading of implants to expedite the restorative outcome. Donath et al. reported that load exerted at the implant interface may interfere with the process of bone healing and lead to fibrous encapsulation.⁴ However, clinical and experimental animal trials have shown that long-term success of removable and fixed prostheses of

immediately loaded dental implants can be achieved.⁵⁻²¹ In a clinical study involving the analysis of a substantial number of implants, Degidi et al. demonstrated the predictability and high success rates of immediate functional and non-functional loading.²² Recently published results of a 7-year follow-up of immediately loaded implants revealed comparable outcomes for delayed loaded implants with a satisfactory level of osseointegration and high success rates. In addition, initial implant mobility does not inevitably prevent osseointegration.²⁴ In general, micromotion at the implant interface has to be distinguished from uncontrolled masticatory forces. The peri-implant bone adjusts

its architecture according to its capacity to withstand functional loading. Consequently, the strains induced by these loads affect the bone remodeling process. It has been suggested in the literature that the magnitude of the load forces between the implant and the bone determines the implant success.²⁵ Therefore, one key to the success of titanium implants seems to be the adequate bone remodeling at the periphery of the implant.²⁶ Microstrain may be a favourable stimulus during the healing period of implants resulting in an increased bone density.²⁷⁻³³ According to Brunski et al. implants can be loaded early or immediately, if micro-movements above a threshold of 100 µm can be avoided during the healing phase.³⁴⁻³⁷ Stronger movements would lead to soft tissue ingrowth at the interface rather than to the desired bone apposition. Cameron et al. reported that osseointegration can be achieved even with micromovements, but not with so-called macromovements.³⁸ In spite of the lack of a consistent terminology on the definition of micro- and macromovements, it has been suggested that a movement of 30 µm or less has no adverse effect on integration, while a movement of 150 µm or more results in soft connective tissue apposition to the implant.³⁹⁻⁴¹ In this context, it can no longer be assumed that immediate loading per se leads to the fibrous encapsulation of implants.⁴²

A successful, accelerated protocol for implant rehabilitation depends upon several interactive factors: Beside accurate pre-surgical diagnostics and treatment planning, implant macro- and microdesign, the adequate fixation and immobility of the implant are of utmost importance to prevent the risk of micromovements related to the surrounding bone. Rigid splinting seems to have a significant impact on the peri-implant tissue response since it is able to reduce the mechanical



stress exerted on each implant. A high predictability of immediate implant loading with fixed provisional restorations has been shown in several reports.^{16,17,46} This indicates that rigid acrylic resin provisional restorations are able to confine the occlusal forces applied to the bone-to-implant interface to a physiological range. Material stability and fracture strength are essential in maintaining the rigidity of provisional restorations on immediately loaded implants over a longer period of time. However, long-span acrylic resin restorations are subject to flexion and fracture under occlusal forces. This applies in particular for a cross-arch stabilization of multiple implants in the edentulous mandible. All previously described techniques for reinforcement of acrylic resin provisional restorations involve either the use of a thin wire or fibers throughout the span, or a time-consuming fabrication of a cast metal framework in the laboratory that covers the facial and/or lingual surfaces of the provisional restoration.^{26,49-53} The objective of this article was to introduce a prosthetic concept for an accelerated rigid splinting of multiple implants for same-day immediate loading with metal-reinforced acrylic resin provisional restorations by utilizing the Syncrystallization technique.

Fig. 1_ Hollow acrylic resin provisional restoration prior to relining.
Fig. 2_ Clinical view after immediate extraction and immediate implant placement (Maestro® Biohorizons).
Fig. 3_ Occlusal view of intraoral welding process: Syncrystallization welding-clamps (System Argon Control®, IMPLAMED) holding implant abutment and titanium bar
Fig. 4_ Intraorally welded titanium bar.
Fig. 5_ Extraoral view of welding spot
Fig. 6_ Try-in of welded abutment-bar construction after opaque was applied.
Fig. 7_ Provisional metal reinforced restoration after relining, trimming, and polishing ready to be delivered 2 hours later.



Fig. 8_ Occlusal view of screw-retained mandibular metal-reinforced provisional restoration in situ.

Fig. 9_ Labial view of maxillary prosthesis and mandibular provisional restoration.

Fig. 10_ Cross section of a welding joint at magnification. Temporary abutment (round section above) and titanium bar (straight section below).

Fig. 11_ Metal-graphic optical microscope picture (MOMP) of complete welding joint without defects.

Fig. 12_ Marginal part of welding joint by MOMP: Note interface of titanium oxide.

Fig. 13_ Central part of welding joint by MOMP: No titanium oxide interface present. Joint is complete (Syncrystallization).

Fig. 14_ Placement of two implants (XIVE®, DENTSPLY Friadent) after extraction of all lower incisors.

Fig. 15_ Temporary abutments and bar after intra-oral welding.

Fig. 16_ Framework after sandblasting and opaque appliance.

Fig. 17_ Temporary restoration relined with framework in situ.

Clinical and Laboratory Procedure

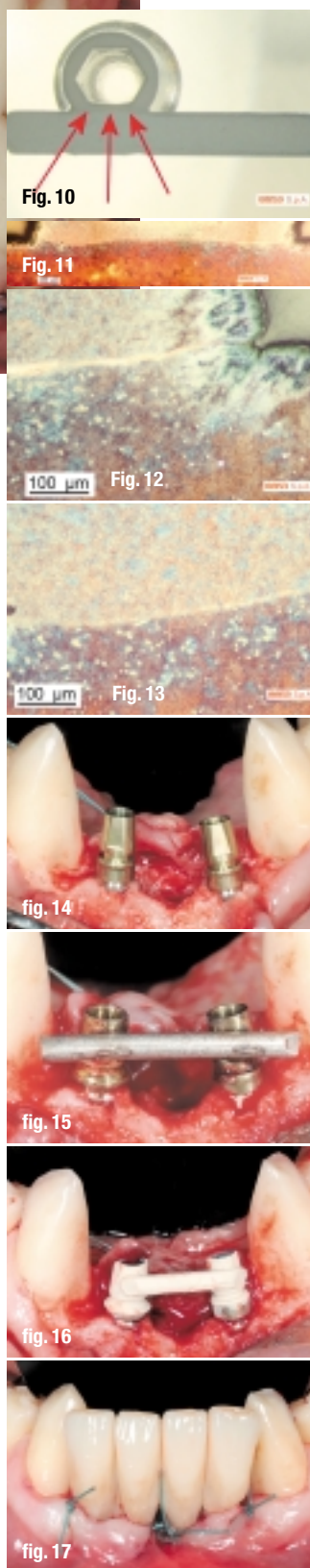
A mucoperiosteal flap is elevated after crestal incision. Implants are placed following the respective manufacturers' instructions. A minimum insertion torque of 30 Ncm is used for all implants to assure clinical stability. First, a face-bow transfer and centric relation record is utilized to mount the diagnostic casts on a semiadjustable articulator. Subsequently, a diagnostic wax-up for a preliminary provisional fixed restoration is fabricated and converted to autopolymerizing resin. After surgical placement of the implants, temporary titanium abutments are connected to them. If implants with an internal hexagon are used, the connection should be rounded before the welding process, avoiding a non-retrievability of the welded piece in case of pronounced disparallelism. The abutments used consisted of two parts (abutment and retaining screw) in order to ensure the retrievability of the welded piece. A pre-existing or prepared flat surface area served as the welding point. A titanium bar is shaped following the curvature of the implants positioned. At this point, temporary titanium implant abutments are welded with the titanium bar in the oral cavity,

using the Syncrystallization Unit (System Argon Control, IMPLAMED, Cremona, Italy). The welding process is electrical and protected by an argon gas supply (Syncrystallization). The equipment allows the welding of metallic elements directly in the mouth. The two elements to be welded are placed

between the two electrodes of a welding clamp. The energy contained in a previously unloaded battery of capacitors is transferred to the electrodes of the welding clamp. Current flowing through the contact points, being in contact with the parts to weld, warms up to the point of fusion, achieving a solid, welded junction. The welding cycle is subdivided in three stages: Pre-gas-, welding, and post-gas phase. While the pre-gas phase allows an oxygen-free welding point prior to the actual fusion, the post-gas phase ensures the absence of oxygen and subsequent oxidation during cooling. A barely perceptible sound can be perceived during use of the Syncrystallization Unit. Welding of the pieces takes only a fraction of a second. The process is carried out without producing any heat, causing no discomfort to the patient or damage to surrounding tissues. Finally, the prosthetic framework, created by welding the titanium bar to the implant abutments is removed and opaque is applied, in order to avoid metal shining through the acrylic resin. The provisional restoration is relined, trimmed, polished and screw-retained the same day. Occlusal contact is avoided in centric and lateral excursions.

Conclusion

Prosthetic challenges in fixed immediate temporization of multiple implants can be both safely and predictably addressed when using the Syncrystallization technique. In addition to rigid implant splinting, the provisional restoration serves as a guide for the final superstructure while esthetics and



phonetics are evaluated for patient acceptance. The temporization procedure can be significantly accelerated and causes minimal discomfort or interruption in function and cosmetics for the patient. In comparison to mere acrylic superstructures, a significant reduction of deformation and strain within metal-reinforced provisional restorations could be detected. The advantages of the new technique are: (1) reduction of treatment time for immediate temporization at stage one surgery; (2) predictable fixation and immobility of implants in the early stages of bone healing; and (3) less time spent for repairing provisional restorations as a result of no or less frequent fracture.

References

1. Brånemark PI, Breine U, Adell R, Hanson BO, Linderström J, Ohlsson A. Intraosseous anchorage of dental prosthesis. I. Experimental studies. *Scandinavian Journal of Plastic Reconstructive Surgery* 1969;3:81-100.
2. Albrektsson T, Brånemark PI, Hansson HA, Lindstrom J. Osseointegrated titanium implants. Requirements for ensuring a long-lasting, direct bone-to-implant anchorage in man. *Acta Orthopaedica Scandinavica* 1981;52:155-170.
3. Brånemark PI. Osseointegration and its theoretical background. *Journal of Prosthetic Dentistry* 1983;50: 399-410.
4. Donath K, Laass M, Gunzl HJ. The histopathology of different foreign-body reactions to oral soft tissue and bone tissue. *Virchows Archiv A Pathol Anat* 1992;420:131-137.
5. Ledermann PD. The New Ledermann Screw (Article in German). *Die Quintessenz* 1988;5:1-17.
6. Schnitman PA, Wöhrle PS, Rubenstein JE. Immediate fixed interim prostheses supported by two-stage threaded implants: Methodology and results. *J Oral Implantol* 1990;16:96-105.
7. Salama H, Rose LF, Salama M, Betts NJ. Immediate loading of bilaterally splinted titanium root-form implants in fixed prosthodontics. A technique reexamined: two case reports. *Int J Periodont Rest Dent* 1995;15:345-361.
8. Ledermann, P.D. More than 20 years of experience with immediate loading of implant borne cantilever prostheses in the interforaminal region. *Zeitschrift für Zahnärztliche Implantologie* 1996;12:123-136.
9. Chiapasco M, Gatti C, Rossi E, Haefliger W, Markwalder TH. Implant-retained mandibular overdentures with immediate loading. A retrospective multicenter study on 226 consecutive cases. *Clin Oral Impl Res* 1997;8:48-57.
10. Tarnow DP, Emtiaz S, Classi A. Immediate loading of threaded implants at stage 1 surgery in edentulous arches: Ten consecutive case reports with 1- to 5-year data. *Int J Oral Maxillofac Implants* 1997;12:319-24.
11. Schnitman PA, Wöhrle PS, Rubenstein JE, DaSilva JD, Wang NH. Ten-year results for Branemark implants immediately loaded with fixed prostheses at implant placement. *Int J Oral Maxillofac Implants* 1997;12:495-503.
12. Balshi TJ, Wolfinger GJ. Immediate loading of Brånemark implants in edentulous mandibles: A preliminary report. *Implant Dent* 1997;6:83-88.
13. Wöhrle PS. Single-tooth replacement in the esthetic zone with immediate provisionalization: fourteen consecutive case report. *Pract Periodont Aesthet Dent* 1998;10:1107-1114.
14. Piattelli A, Corigliano M, Scarano A, Costigliola G, Paolantonio M. Immediate loading of titanium plasma-sprayed implants: A pilot study in monkeys. *J Periodontol* 1998;69:321-327.
15. Misch CE. Non-functional immediate teeth in partially edentulous patients: A pilot study of 10 consecutive cases using the Maestro dental implant system. *Compendium* 1998;19:25-36.
16. Jaffin RA, Kumar A, Berman CL. Immediate loading of implants in partially edentulous jaws: A series of 27 case reports. *J Periodontol* 2000;71:833-838.
17. Horiuchi K, Uchida H, Yamamoto K, Sugimura M. Immediate loading of Branemark system implants following placement in edentulous patients: A clinical report. *Int J Oral Maxillofac Implants* 2000;15:824-830.
18. Rocci A, Martignoni M, Gottlow J, Rangert B. Immediate function of single and partial reconstructions in the maxilla using MK IV fixtures. A retrospective analysis. *Applied Osseointegration Research* 2001;2:22-26.
19. Cooper LF, Rahman A, Moriarty J, Chaffee N, Sacco D. Immediate mandibular rehabilitation with endosseous implants: Simultaneous extraction, implant placement and loading. *Int J Oral Maxillofac Implants* 2002;17:517-525.
20. Degidi M, Piattelli A. Immediate functional and non-functional loading of dental implants: A 2 to 60 months follow-up study of 646 titanium implants. *J Periodontol* 2003;74:225-241.
21. Degidi M, Piattelli A, Felice P, Carinci F. Immediate functional loading of edentulous maxilla: A 5-year retrospective study of 388 titanium implants. *J Periodontol*. 2005 Jun;76(6):1016-24.
22. Degidi M, Piattelli A. Comparative analysis study of 702 dental implants subjected to immediate functional loading and immediate non-functional loading to traditional healing periods with a follow-up of up to 24 months. *Int J Oral Maxillofac Implants*. 2005;20:99-107.
23. Degidi M, Piattelli A: 7-year follow-up of 93 immediately loaded titanium dental implants. *J Oral Implantol*. 2005;31(1):25-31.
24. Ivanoff, C.J., Sennerby, L. & Lekholm, U. Influence of initial implant mobility on the integration of tita-

- nium implants. An experimental study in rabbits. *Clinical Oral Implants Research* 1996;7:120–127.
25. Hoshaw SJ, Brunski JB, Cochran GVB. Mechanical loading of Brånemark implants affects interfacial bone modeling and remodeling. *Int J Oral Maxillofac Implants* 1994;9:345–360.
26. Nkenke E, Lehner B, Weinzierl K, Thams U, Neugebauer J, Steveling H, Radespiel-Tröger M, Neukam FW. Bone contact, growth, and density around immediately loaded implants in the mandible of mini pigs. *Clin Oral Impl Res*. 14, 2003: 312–321.
27. Frost HM. The role of changes in mechanical usage set points in the pathogenesis of osteoporosis. *J Bone Mineral Res* 1992;7:253–261.
28. Piattelli A, Ruggeri A, Trisi P, Romasco N, Franchi M. A histologic and histomorphometric study of the bone reactions to non-submerged unloaded and loaded single implants in monkeys. *J Oral Implantol* 1993;19:314–320.
29. Piattelli A, Trisi P, Romasco N, Emanuelli M. Histological analysis of a screw implant retrieved from man: Influence of early loading and primary stability. *J Oral Implantol* 1993;19:303–306.
30. Piattelli A, Corigliano M, Scarano A. Microscopic observations of the osseous responses in early loaded human titanium implants: A report of two cases. *Biomaterials* 1996;17:1333–1337.
31. Piattelli A, Corigliano M, Scarano A, Quaranta M. Bone reactions to early occlusal loading of two-stage titanium plasma-sprayed implants: A pilot study in monkeys. *Int J Periodont Rest Dent* 1997;17:163–169.
32. Piattelli A, Scarano A, Paolantonio M. Immediately loaded screw implant removed for fracture after a 15-year loading period: Histological and histochemical analysis. *J Oral Implantol* 1997; 23:75–79.
33. Degidi M, Scarano A, Piattelli M, Perrotti V, Piattelli A. Bone remodeling in immediately loaded and unloaded titanium dental implants: A histologic and histomorphometric study in humans. *J Oral Implantol*. 2005;31(1):18–24.
34. Brunski JB, Moccia AF Jr, Pollack SR, Korostoff E, Trachtenberg DI. The influence of functional use of endosseous dental implants on the tissue-implant interface. I. Histological aspects. *J Dental Res* 1979;58:1953–1969.
35. Brunski JB. Influence of biomechanical factors at the bone-biomaterial interface. In: Davies JE (eds). *The Bone-Biomaterial Interface*. Toronto: Toronto University Press, 1991:391–405.
36. Brunski JB. Forces on dental implants and interfacial stress transfer. In: Laney WR, Tolman DE (eds). *Tissue Integration in Oral, Orthopaedic and Maxillofacial Reconstruction*. Chicago: Quintessence, 1992:108–124.
37. Brunski JB. Avoid pitfalls overloading and micro-motions of intraosseous implants (Interview). *Dent Implantol Update*, 1993; 4(10):77–81.
38. Cameron HU, Macnab I, Pilliar R. Porous surfaced vitallium staples. *South Afr J Surg* 1972.
39. Pilliar RM, Lee JM, Maniopoulos C. Observations on the effect of movement on bone ingrowth into porous-surfaced implants. *Clinical Orthopedics* 1986;208:108–113.
40. Brunski JB. Biomechanical factors affecting the bone-dental implant interface: Review paper. *Clinical Materials* 1992;10:153–201.
41. Szmukler-Moncler S, Salama H, Reingewirtz Y, Dubruille JH. Timing of loading and effect of micro-motion on bone-dental implant interface: Review of experimental literature. *J Biomed Mater Res* 1998;43:192–203.
42. Szmukler-Moncler S, Piattelli A, Favero GA, Dubruille JH. Considerations preliminary to the application of early and immediate loading protocols in dental implantology. *Clin Oral Impl Res* 2000;11:12–25.
43. Schnitman PA, Wohrle PS, Rubenstein JE. Immediate fixed interim prostheses supported by two-stage threaded implants: Methodology and results. *J Oral Implantol* 1990;16:96–105.
44. Balshi TJ, Wolfinger GJ. Conversion prosthesis: A transitional fixed implant-supported prosthesis for an edentulous arch—a technical note. *Int J Oral Maxillofac Implants* 1996;11:106–111.
45. Misch CM. Immediate loading of definitive implants in the edentulous mandible using a fixed provisional prosthesis: The denture conversion technique. *J Oral Maxillofac Surg*. 2004;62(9 Suppl 2):106–15.
46. Rodrigues AH, Morgano SM, Guimaraes MM, Ankly R. Laboratory-processed acrylic resin provisional restoration with cast metal substructure for immediately loaded implants. *J Prosthet Dent*. 2003;90(6):600–4.
47. Zarone F, Apicella A, Nicolais L, Aversa R, Sorrentino R. Mandibular flexure and stress build-up in mandibular full-arch fixed prostheses supported by osseointegrated implants. *Clin Oral Implants Res*. 2003;14(1):103–14.
48. Hobkirk JA, Schwab J. Mandibular deformation in subjects with osseointegrated implants. *Int J Oral Maxillofac Implants*. 1991;6(3):319–28.
49. Saba S. Design of a cast bar reinforced provisional restoration for the management of the interim phase in implant dentistry. *J Can Dent Assoc* 1999;65:160–162.
50. Binkley JC, Irvin PT. Reinforced heat-processed acrylic resin provisional restorations. *J Prosthet Dent* 1987;57:689–93.
51. Emtiaz S, Tarnow DP. Processed acrylic resin provisional restoration with lingual cast metal framework. *J Prosthet Dent* 1998;79(4):484–8.
52. Burns DR, Beck DA, Nelson SK. A review of selected dental literature on contemporary provisional fixed prosthodontic treatment: Report of the

Committee on Research in Fixed Prosthodontics of the Academy of Fixed Prosthodontics. *J Prosthet Dent* 2003;90(5):474-97.

53. Hamza TA, Rosenstiel SF, Elhosary MM, Ibraheem RM. The effect of fiber reinforcement on the fracture toughness and flexural strength of provisional restorative resins. *J Prosthet Dent* 2004;91(3):258-64

54. Hart RT, Hennebel WV, Thongpreda N, Van Buskirk WC, Anderson RC. Modeling the biomechanics of the mandible: A three-dimensional finite element study. *J Biomech*. 1992;25(3):261-86.

55. Koriath TW, Romilly DP, Hannam AG. Three-dimensional finite element stress analysis of the dentate human mandible. *Am J Phys Anthropol*. 1992;88(1):69-96.

56. Koriath TW, Hannam AG. Deformation of the human mandible during simulated tooth clenching. *J Dent Res*. 1994;73(1):56-66.

57. Helkimo E, Carlsson GE, Helkimo M. Bite forces used during chewing of food. *J Dent Res* 1959;29:133-136.

58. Gibs CH, Mahan PE, Mauderli A, Lundeen HC, Walsh EK. Limits of human bite strength. *J Prosthet Dent* 1986;226-229.

59. Waltimo A, Könönen A. A novel bite force recorder and maximal isometric bite force values for healthy young adults. *Scand J Dent Res* 1993;1001:171-175.

60. Ferrario VF, Sforza C, Serrao G, Dellavia C, Tartaglia GM. Single tooth bite forces in healthy young adults. *J Oral Rehabilitation* 2004;31:18-22.

61. Melo C, Matsushita Y, Koyano K, Hirowatari H, Suetsugu T. Comparative stress analyses of fixed free-end osseointegrated prostheses using the finite element method. *J Oral Implantol* 1995;21(4):290-4.

62. O'Brien WJ. Dental materials and their selection, Textbook, 2nd ed., 1997, Quintessence Publishing.

63. Bratu E, Steigmann M. Analyse der strukturalen Spannungen zwischen Implantat und Knochen. *Implantologie Journal* 2003;7:47-49.

64. Lindquist LW, Rockler B, Carlsson GE. Bone resorption around fixtures in edentulous patients treated with mandibular fixed tissue-integrated prostheses. *J Prosthet Dent* 1988;59(1):59-63.

65. Peters M, Leyens C, Kumpfert J. Titan und Titanlegierungen. Textbook, DGM Deutsche Gesellschaft für Materialkunde Verlag, 1996.

66. Woebcken W. International plastic handbook for the technologist, engineer and user. Textbook 3rd Edition, Hanser Puplichers, Munich Vienna New York, 1995.

_corresponding author

implants

Peter Gehrke, Dr. med. dent.

Bismarckstrasse 27

67059 Ludwigshafen

Germany

E-mail: dr-gehrke@dr-dhom.de

Fax: +49-621 68124469

Rigid temporization has been recognized to have a significant impact on the peri-implant tissue response in immediate implant loading since it reduces the mechanical stress exerted on each implant. The objective of this article was to introduce a prosthetic concept for an accelerated rigid splinting of multiple implants for same-day immediate loading with metal-reinforced provisional restorations using a novel technique (Syncrystallization) of welding temporary implant abutments with a pre-fabricated titanium bar directly in the oral cavity.